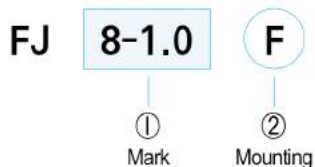


Floating Joint

(Series FJ)

M4~M36

How to order



① Mark

Mark	Nominal screw thread	Radial deflection
4-0.7	M4 × 0.7	φ 10
5-0.8	M5 × 0.8	φ 16
6-1.0	M6 × 1.0	Option
8-1.0	M8 × 1.0	Option
8-1.25	M8 × 1.25	φ 20
10-1.25	M10 × 1.25	φ 25, φ 30, φ 32
12-1.5	M12 × 1.5	Option
14-1.5	M14 × 1.5	φ 40
18-1.5	M18 × 1.5	φ 50, φ 63
20-1.5	M20 × 1.5	Option
22-1.5	M22 × 1.5	φ 80
26-1.5	M26 × 1.5	φ 100
30-1.5	M30 × 1.5	φ 125, φ 140
36-1.5	M36 × 1.5	φ 160

② Mounting

Blank	Standard type
F	Flange type

Precautions

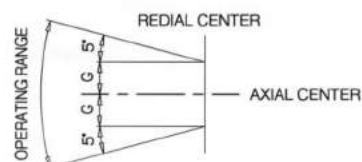
- ① Floating joint is provided to fit to the piston rod end of an air cylinder
- ② Do not use for rotation because of non rotating shaft coupling
- ③ Cannot be re-used after dismantling

- Axial alignment unnecessary
- Sophisticated machining accuracy unnecessary
- Substantial reduction of mounting work and time
- Long life(with dust-tight cover)

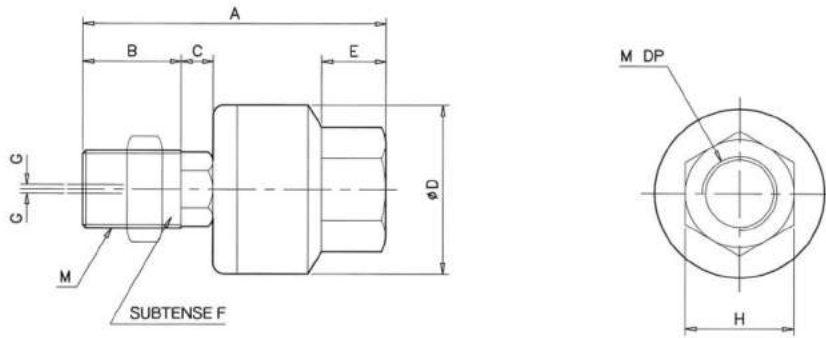
Specifications

Model	Nominal screw thread designation of applicable cylinder	Radial deflection	Allowable eccentricity (mm)	Max. operating tension and compression power (kgf)
FJ4-0.7	M4 × 0.7	±5°	0.5	5.4
FJ5-0.8	M5 × 0.8			12.3
FJ6-1.0	M6 × 1.0			12.3
FJ8-1.0	M8 × 1.0			110
FJ8-1.25	M8 × 1.25			110
FJ10-1.25	M10 × 1.25			250
FJ12-1.5	M12 × 1.5		0.75	440
FJ14-1.5	M14 × 1.5			600
FJ18-1.5	M18 × 1.5		1	1100
FJ20-1.5	M20 × 1.5		1.25	1800
FJ22-1.5	M22 × 1.5			1800
FJ26-1.5	M26 × 1.5		2	2800
FJ30-1.5	M30 × 1.5		2.5	5400
FJ36-1.5	M36 × 1.5		3	7100

Operating range



Basic Type

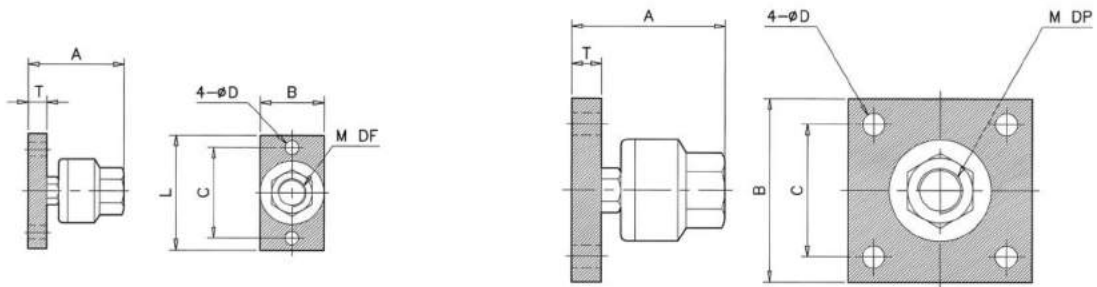


Applicable Cylinder bore	Model	Screw		A	B	C	φ D	E	F	Allowable eccentricity G	H
		M	DP(tep dept)								
φ 10	FJ4-0.7	4 × 0.7	5	26	10	1.5	12	4	4	0.5	7
φ 16	FJ5-0.8	5 × 0.8	7	34.5	14	2	16	5	6	0.5	10
φ 16	FJ6-1.0	6 × 1.0	7	34.5	14	2	16	5	6	0.5	10
φ 20	FJ8-1.0	8 × 1.0	8	44	16.5	5	21	7	7	0.5	13
φ 20	FJ8-1.25	8 × 1.25	8	44	16.5	5	21	7	7	0.5	13
φ 25, φ 30, φ 32	FJ10-1.25	10 × 1.25	9	49	18.5	5	24	8	8	0.5	17
φ 40	FJ12-1.5	12 × 1.5	12	62	22	5	31	11	11	0.75	22
φ 40	FJ14-1.5	14 × 1.5	12	62	22	5	31	11	11	0.75	22
φ 50, φ 63	FJ18-1.5	18 × 1.5	14	76	27	6	40	13	14	1	27
φ 80	FJ20-1.5	20 × 1.5	17	89	29	8	50	16	19	1.25	32
φ 80	FJ22-1.5	22 × 1.5	17	89	29	8	50	16	19	1.25	32
φ 100	FJ26-1.5	26 × 1.5	24	110	37	8.5	59.5	20	24	2	41
φ 125, φ 140	FJ30-1.5	30 × 1.5	30	153	44.5	14	79	22	27	2.5	46
φ 160	FJ36-1.5	36 × 1.5	36	179	54.5	16	96	24	32	3	55

Flange Type(F)

FJ8-1.0F~14-1.5F

FJ18-1.5F~36-1.5F



Applicable cylinder bore	Model	Screw		A	B	C	φ D	L	T
		M	DP(tep dept)						
φ 20	FJ8-1.25F	8 × 1.25	8	32.5	19	36	6.6	48	6
φ 25, φ 30, φ 32	FJ10-1.25F	10 × 1.25	9	36	25	40	6.6	52	6
φ 40	FJ14-1.5F	14 × 1.5	13	49	32	52	9	70	9
φ 50, φ 63	FJ18-1.5F	18 × 1.5	15	61.5	65	45	9	-	12
φ 80	FJ22-1.5F	22 × 1.5	18	76.5	75	55	11	-	16
φ 100	FJ26-1.5F	26 × 1.5	24	94	90	65	11	-	19
φ 125, φ 140	FJ30-1.5F	30 × 1.5	30	131	125	82	18	-	24
φ 160	FJ36-1.5F	36 × 1.5	36	152	150	100	22	-	29